

# ADMINISTRATIVE COUNCIL MINUTES

July 14, 2022

---

---

The Administrative Council met on Thursday, July 14, 2022 at 9:00 a.m. in the Athens State Ballroom. Present were Dr. Rick Barth; Ms. Toni Carter; Ms. Pam Clark, Recorder; Mr. Richard Collie; Mr. Jonathan Craft; Ms. Belinda Krigel; Dr. Kim LaFavor; Ms. Sarah McAbee; Dr. Ronnie Merritt (Delap proxy); Mr. Derrek Smith; Dr. Philip Way; Dr. Catherine Wehlburg; and Dr. Lionel Wright. Dr. Joe Delap; Dr. Andrew Dollar; Dr. Keith Ferguson; Dr. Jameha Gardner; Ms. Jackie Gooch; Mr. Jeffrey Guenther; Ms. Beth Jenkins; Mr. Chris Latham; Mr. Mike McCoy; Mr. Benjamin Shepard, SGA President; Mr. Gary Valcana; and Dr. Lee Vartanian were absent.

Dr. Way convened the meeting at 9:00 a.m. and welcomed everyone. There were no corrections to the June minutes and they were unanimously approved on a voice vote.

Dr. Way stated the focus of the meeting is to get an update on the QEP. He turned the meeting over to Dr. Wehlburg and Dr. Maxwell. Dr. Wehlburg stated we are in the mid-year of our five year QEP project, which is a requirement from SACS. She turned the meeting over to Dr. Maxwell who gave a presentation on "QEP: Experiential Learning." The members were divided into four groups for discussions.

## **Hands-On Learning – Barth, Smith and Wright**

1. What we have learned so far – highlights?  
More is being done than we realized.
2. What has worked?  
On-going discussions, visual learning and the clarity of identifying the categories
3. What needs improvement?  
More buy-in and participation needed
4. What needs to change "mid-flight"?  
Finding that "sweet spot" of optional and mandatory. What is the expectation?
5. Reflections on the EL program and its impact.  
Student enjoyment

## **Learning Through Research – Carter, Craft and Krigel**

1. What we have learned so far – highlights?  
Faculty are willing to provide students with research activities and opportunities.
2. What needs improvement?  
There are ways we can enhance. Are we assessing students' research skills? Are faculty partnering with librarians that have expertise in types of information available? Do students know about the publishing process? Do students understand how research is shared? How can the library help?

## **Community-Based Learning – LaFevor and Way**

1. What we have learned so far – highlights?  
We are already supporting community needs while providing students relevant, pragmatic work experiences. Do we have clear learning outcomes against what we are measuring?
2. What has worked?  
Faculty and student engagement is working. Community/Employer satisfaction with end products.
3. What needs improvement?  
May need some opportunities in the assessment process and the use of Collaboratory. There is an opportunity to increase the knowledge of community employers about faculty and student engagement in business improvements.
4. What needs to change “mid-flight”?  
Encourage faculty to identify EL opportunities for students in the classroom. Define outcomes.
5. Reflections on the EL program and its impact.  
Helpful to understand the “big picture” in EL initiatives and be able to benchmark best practices and identify resources. There have been powerful, relevant outcomes in student learning and competency building.

## **Learning Through Expeditions – McAbee, Merritt and Wehlburg**

1. What we have learned so far – highlights?  
Many students have not traveled outside of the state. Traveling is a learning experience.
2. What has worked?  
Students learn more deeply about their content areas. Students and faculty get a chance to reflect.
3. What needs improvement?  
Expand study-abroad to include cross cultural experiences in our own back yard. We need policies and money for learning expeditions.
4. What needs to change “mid-flight”?  
Can we do expeditions online? What about virtual reality?
5. Reflections on the EL program and its impact.  
The EL program is doing well and gives us the opportunity to help our students.

## **Workplace Learning**

There were no members in this group. Dr. Maxwell stated we have co-ops and internships. We use Handshake to help students find opportunities. A need for improvement is to find a way for students to let us know what organization they have an internship with since Handshake does not track the organizations.

Dr. Maxwell thanked everyone for their time and input. The meeting adjourned at 10:25 a.m.

Respectfully submitted by: Pamela Clark

Attachment: “QEP: Experiential Learning” Presentation

# QEP: Experiential Learning

**Dr. Catherine Wehlburg**

**Dr. Katia Maxwell**

July 14, 2022





WELCOME





# Today's Flight

- A view of our two year journey
- Information collected
- Activities shared
- The success we have seen
- A program for community
- Happening now
- A time to reflect







# Looking Back...

- **January – August 2020**

- Goal: Determine what EL meant to Athens State
- Surveys sent out to stakeholders
- Learned about
  - Everyone's interpretation of EL
  - Faculty interest in EL
  - Who was doing it, and didn't know it?

- **August 2020 – August 2021**

- Survey created for students to complete after EL activity
- Rubric created for faculty to complete after EL activity
- We spread the word
  - 13 newsletters
  - 9 highlighted classroom activities
  - 1 highlighted activities through student organizations
  - 3 informational



# Data Collection

- AY 2020 – 2021
  - 19 faculty members participated in assisting us with data collection
- AY 2021-2022
  - 16 faculty members participated in assisting us with data collection
- To date (end of Spring 2022)
  - 676 surveys have been completed
    - 333 in AY 2020-2021
    - 343 in AY 2021-202
- Six classes this summer are conducting EL and we are expecting surveys to be completed from those.





# Activities Shared (1 of 5)

- Hands-On Learning
  - Leigh Hester
  - Jessica Spowart
  - Kim Roberts

## HANDS-ON LEARNING

Experiential Learning

### CONTROLLED ENVIRONMENT

Faculty are present to be facilitators and active within the student's learning experience.



### SIMULATIONS

Students work through simulations that are representative of the real world work environment and tasks that they would complete on the job.

### SPECIAL PROJECTS

Students work on projects that are designed by faculty that correlate to duties in their chosen career field.



### THE BENEFITS

- Students retain material through the act of "doing" rather than just memorizing. Actions allow for recollection vs. remembering.
- Students feel more engaged in the learning process which can lead to additional interests.
- Students critical thinking skills increase since they have to make decisions on actions that need to be taken to obtain their end goal.
- Students gain the real world experience of using materials and equipment that would be found on the job while they have the assistance of an instructor.



**EXPERIENCE | SUCCESS**



# Activities Shared (2 of 5)

- Community Based Learning
  - Rhonda Andrews
  - Laura Wendling
  - Katia Maxwell

## COMMUNITY BASED LEARNING

Experiential Learning

### CREATE PARTNERSHIPS

Provide local non-profit organizations with information associated to the skill sets that students have. Share ideas of possible projects. Determine if there is an interest for sponsorship of a class project.

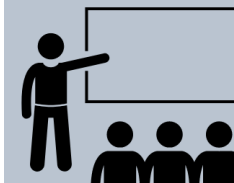


### STUDENT BRAINSTORMING

Share the project with students in the class. Have them brainstorm on ideas of how to successfully complete the project for the sponsor.

### CREATION PROCESS

Provide students guidance through a designated time frame in the creation process.



### PRESENT RESULTS

Students present their work to the project sponsor. The sponsor will have the opportunity to provide students with feedback on their work, and choose to adopt their creation.

EXPERIENCE | SUCCESS



# Activities Shared (3 of 5)

- Learning Through Expeditions
  - Shannon Pittman
  - Tish Bergantz

## LEARNING THROUGH EXPEDITION

Experiential Learning



### Wheeler National Wildlife Refuge

Students conduct wildlife sampling, with emphasis on amphibian and reptiles surveys. Visual encounter and amphibian egg mass surveys are conducted. Students also learn about data collection and database management.



### Smoky Mountains

Students go hiking with the intent to view different wildlife and identify trees. They also investigate the effects of elevation and climate on forest composition. Students have the first hand experience of learning the effects of human and natural disturbance on forest ecosystems.



### Dauphin Island

Students are engaged in marine sampling and species identification. Students also have the opportunity to investigate coastal ecosystem dynamics and the effects of human development on coastlines and coastal habitats.



### Study Abroad

Study abroad is more than going from here to there. It's an exhilarating challenge of academic and cultural immersion.



EXPERIENCE | SUCCESS



# Activities Shared (4 of 5)

- Learning through Research
  - Timothy Thornton
  - Cyndi Lovelace
  - Sara Cline

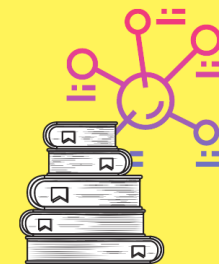
## LEARNING THROUGH RESEARCH

### Experiential Learning

#### GUIDANCE

STUDENTS PARTNER WITH FACULTY TO CONDUCT RESEARCH IN TOPICS THAT ARE RELEVANT TO THE COMMUNITY AND/OR DISCIPLINE.

STEP 01



STEP 02

#### THE RESEARCH

STUDENTS FOCUS ON THEORETICAL ASPECTS OF A DISCIPLINE ALONG WITH HYPOTHESIS AND PROOFS.

#### THE IDEATION

MAJORITY OF THE RESEARCH COMES FROM STEM FIELDS. HOWEVER, INTERDISCIPLINARY OPPORTUNITIES HAVE TAKEN PLACE WITH HUMANITIES AND EDUCATION.

STEP 03



STEP 04

#### THE PRODUCTION

STUDENTS WILL WORK WITH SPECIALIZED LAB EQUIPMENT AND COMPUTING TECHNOLOGY TO CONDUCT EXPERIMENTS TO OBTAIN THEIR RESULTS

#### THE RESULTS

STUDENTS PUBLISH PAPERS, JOURNALS, POSTERS IN PEER REVIEWED VENUES. STUDENTS ALSO PRESENT RESEARCH TO THE ATEHNS STATE UNIVERSITY COMMUNITY

STEP 05



EXPERIENCE | SUCCESS



# Activities Shared (5 of 5)

- Workplace Learning
  - Debbie Wilson
  - Vanessa Miller-Curtis
  - Liz Bowden

## EXPERIENTIAL LEARNING

### WORKPLACE LEARNING

#### INTERNSHIPS

Internships exist in a wide variety of industries and settings. It can be paid, unpaid, or partially paid. Internships may be part-time or full-time and are usually flexible with students' schedule. A typical internship lasts between one and four months, but can be shorter or longer, depending on the organization involved.

#### FIELD EXPERIENCE

This is an opportunity to apply knowledge gained in the classroom with supervised practice in the field (a Pre/K-12 classroom setting). This is an all day, full-semester placement in a school setting that is generally completed the final fall or spring semester of enrollment in the teacher education program.

#### FOR-PROFIT COMMUNITY ENGAGEMENT

This is similar to the community engagement category however the work is done for a for-profit organization not a non-profit organization. Faculty share skill sets and types of projects that their students are able to complete. A representative from the organization agrees to sponsor a project in which the students will work on and present the results at the end of the semester.

#### JOB SHADOW

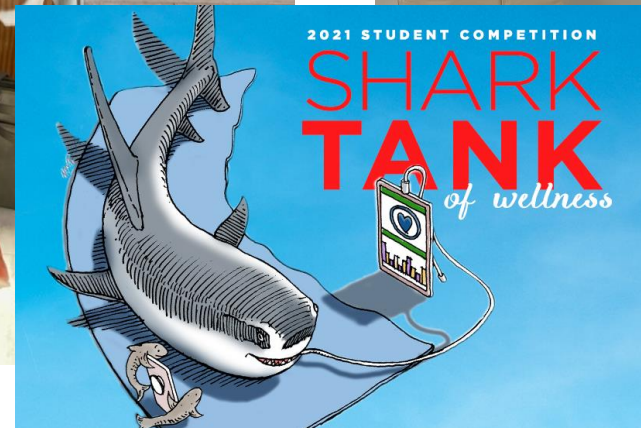
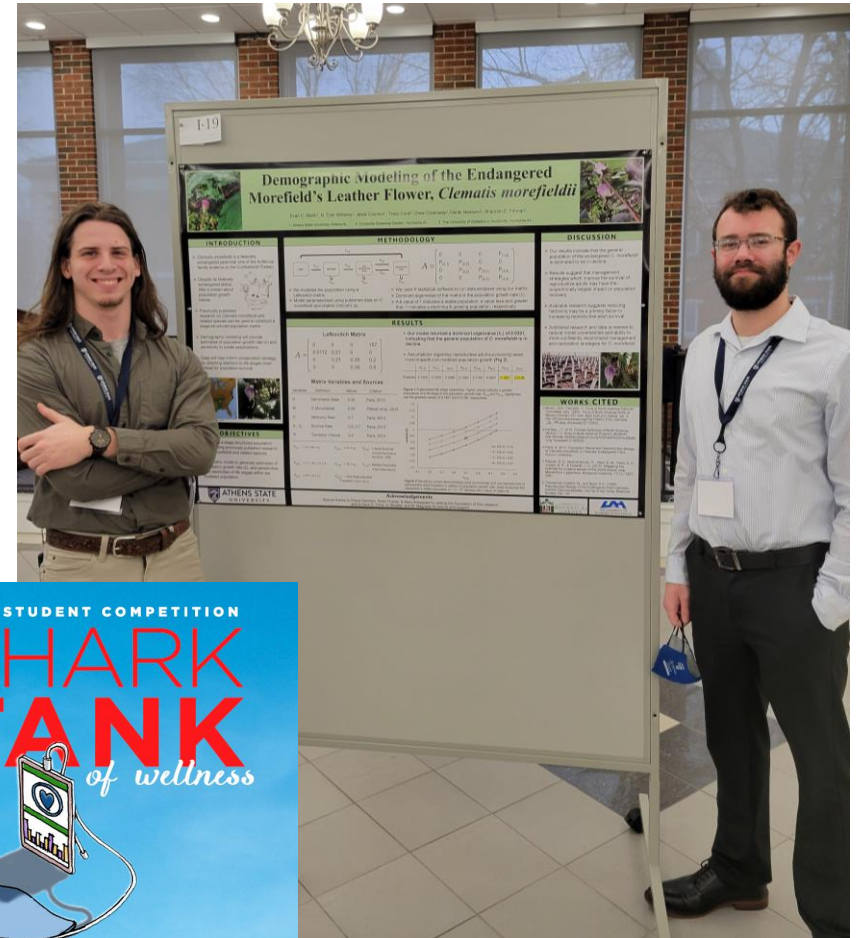
On-the-job learning, career, development, and leadership development program. Working with another employee who might have a different job in hand, have something to teach, or be able to help the person shadowing him or her to learn new aspects related to the job, organization, certain behaviors or competencies.

## EXPERIENCE | SUCCESS





# Student Success





# Program Success

- Marketing materials created
  - Flyers
  - Banners
  - Brochures
  - Promotional Items
- National & Regional Professional Development
  - NSEE 2021
  - ELLI 2022
  - NSEE 2022





# Building a Community

- **Experiential Learning Faculty Fellowships**
  - Five applicants
  - Each college is represented
  - Fellowship program begins Fall 2022
- **First year of Fellowship**
  - Develop community between faculty cohort
- **Second year of Fellowship**
  - Serve as mentors
  - Submit proposal for publication or presentation



# Prepare for landing...





# Happening Now (1 of 2)

- List of identified courses with possible EL activities
  - List needs to be confirmed
  - Currently 111 classes on the list
- Meetings taking place
  - July 22<sup>nd</sup> QEP Assessment leads will be meeting to discuss tasks for AY 2022-2023
  - July 26<sup>th</sup> I will be meeting with recruiters and admissions counselors about EL
- Fellowship
  - Three books are being reviewed to be accepted as resources for the Fellowship
  - Details and timeline for the Fellowship are also being finalized



# Happening Now (2 of 2)

- Marketing
  - Website updates
  - Design for a general EL Banner
- New Directions of Teaching and Learning
- Office of EL and Special Projects to recruit faculty for an Early and Mid Career Advancement grant



## EXPERIENTIAL LEARNING



### 5 WAYS TO PARTICIPATE IN EXPERIENTIAL LEARNING

- 1 WORKPLACE LEARNING**  
Connect with the Career Development Center to find out about possible internships and co-op courses.
- 2 LEARNING THROUGH RESEARCH**  
Work with faculty on research with a goal to attend, present, or publish at a conference.
- 3 HANDS-ON LEARNING**  
Use skills that you may be required to use in your chosen career field as part of your classroom experience.
- 4 LEARNING THROUGH EXPEDITIONS**  
Participate in a study abroad program or take classes that allow you to have class outside of the traditional classroom.
- 5 COMMUNITY-BASED LEARNING**  
Connect the knowledge and skills that you are learning in the classroom with activities that allow for you to give back to the community.

EXPERIENCE | SUCCESS







# Boarding Call

**DELAYED!**

- Activity – Identify
  - What we have learned so far?
  - What has worked?
  - What needs improvement?
  - What needs to change “mid-flight”?
- Overall reflection on the EL program and its impact.





On to the next leg of the journey...





THANK YOU